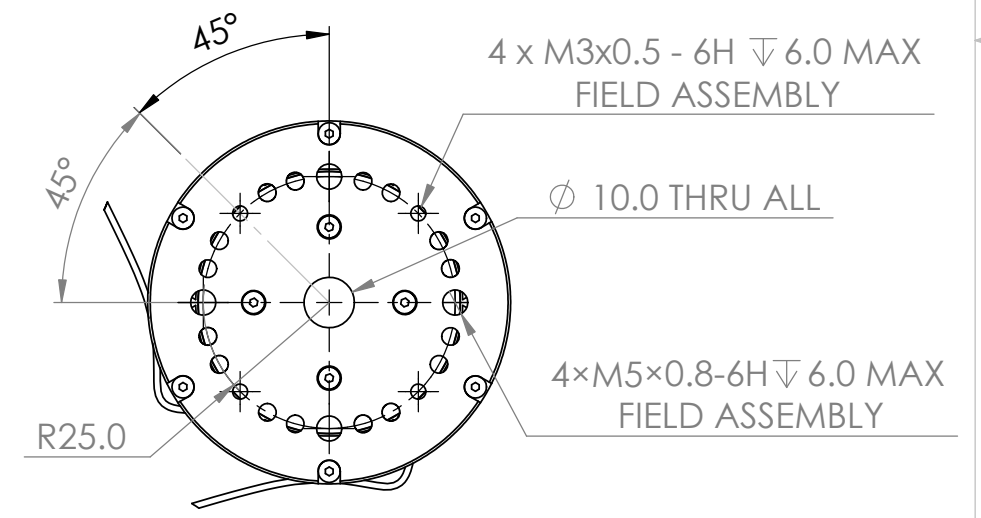
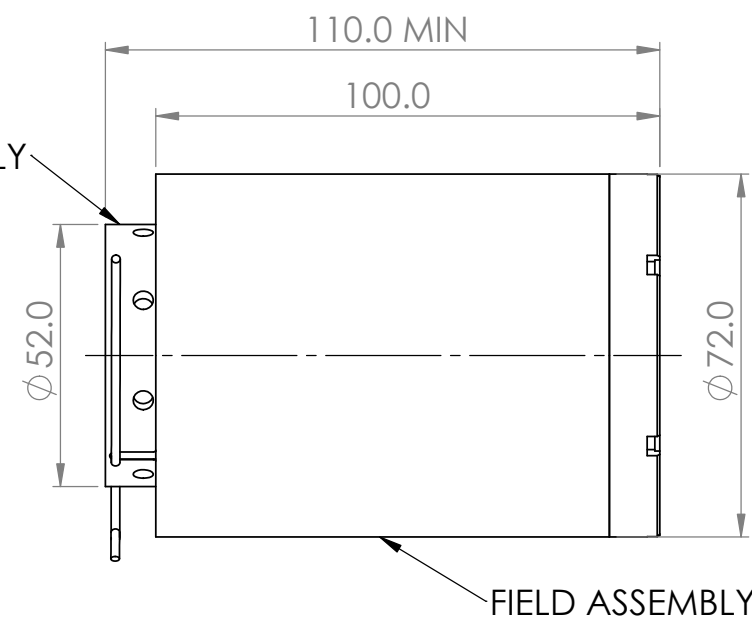
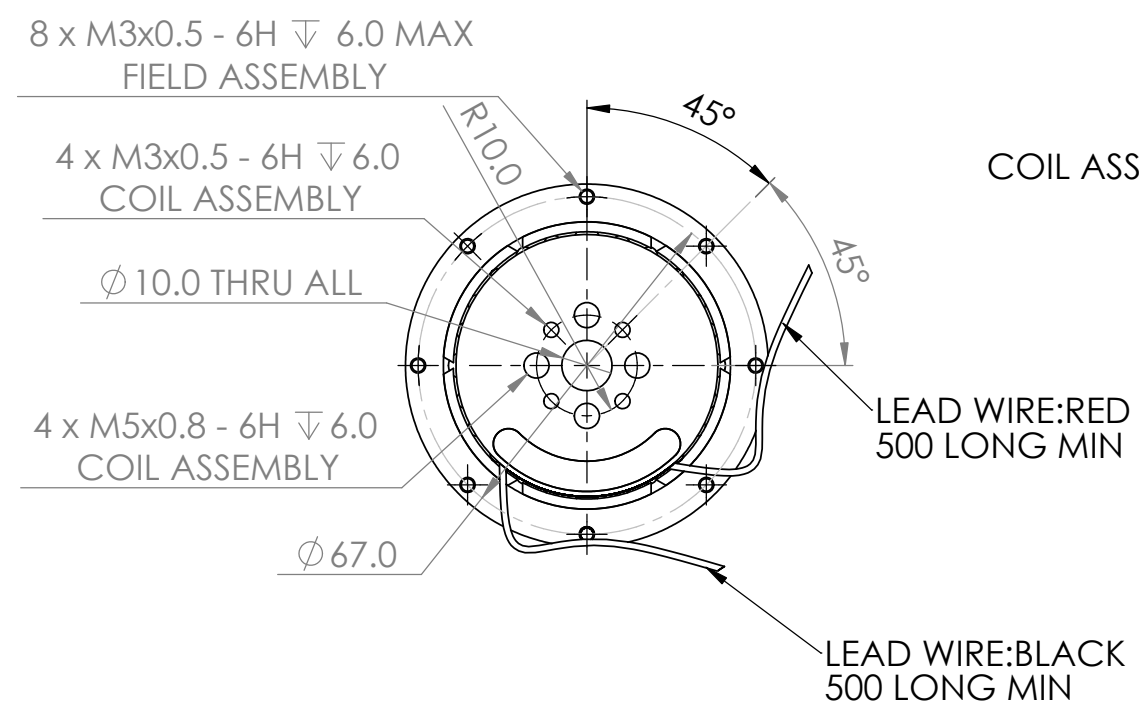
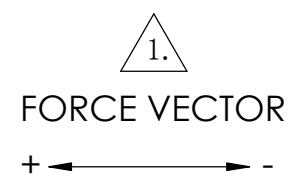
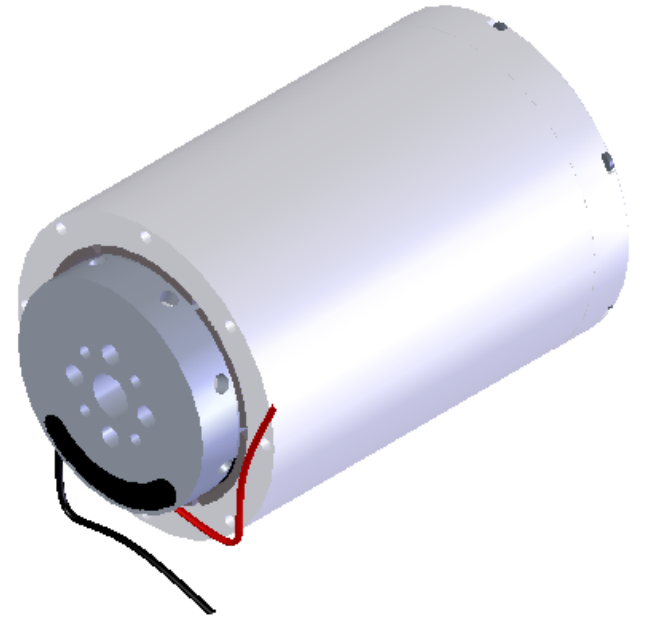


WINDING CONSTANT	TOL	SYM	VALUE	UNITS
DC RESISTANCE	± 10%	R	5.9	OHMS
VOLTAGE @ Fp	NOMINAL	Vp	63.4	VOLTS
CURRENT @ Fp	NOMINAL	Ip	10.7	AMPS
FORCE SENSITIVITY	± 10%	Kf	8.1	N / A
BACK EMF CONSTANT	NOMINAL	Kb	8.1	V/M/Sec
INDUCTANCE*****	± 30%	L	4.2	mH

ACTUATOR PARAMETER	SYM	VALUE	UNITS
PEAK FORCE *	Fp	87.0	N
CONTINUOUS FORCE **	Fc	17.5	N
CONTINUOUS FORCE WITH HEAT SINK	Fc	18.2	N
ACTUATOR CONSTANT	Ka	3.33	N/√w
ELECT TIME CONSTANT	Te	0.71	milli-sec
POWER I2R@Fp	Pp	680	W
TOTAL STROKE	S	56.3	mm
CLEARANCE ON SIDE OF COIL	CL	0.5	mm
THERMAL RESISTANCE ***	θth	4.5	C / W
THERMAL RESISTANCE WITH HEAT SINK****	θth	4.2	C / W
MAX WINDING TEMP	Tmax	150	C
WEIGHT OF COIL ASSEMBLY	WTc	170	g
WEIGHT OF FIELD ASSEMBLY	WTf	2580	g
WEIGHT OF ACTUATOR	WTa	2750	g

* 10 sec @ 25C ambient, 150C coil temp.
 ** 25C ambient, 150C coil temp.
 *** In free air.
 **** Measured with 250×250×10mm heat sink.
 ***** Measured with TONGHUI TH2821A.

REV	ECO NO.	DESCRIPTION	DRN	APP'D	Q.A.	DATE
X1	---	INITIAL RELEASE	BWZ	WYG	LBQ	07/09/26



2.INSULATION RESISANCE:100 MEGOHMS MINIMUM AT 500 VDC.
 △. A POSITIVE(+)VOLTAGE APPLIED TO THE RED LEAD WILL PRODUCE A FORCE ON THE COIL ASSEMBLY IN POSITIVE (+) DIRECTION.
 NOTES:UNLESS OTHERWISE SPECIFIED

UNLESS OTHERWISE SPECIFIED:		NAME	DATE	Suzhou, China
DIMENSIONS ARE IN MM TOLERANCES: ANGULAR: MACH ±0° 30' ONE PLACE DECIMAL ±0.25 TWO PLACE DECIMAL ±0.1		DRAWN	BWZ 07-09-26	
PROPRIETARY AND CONFIDENTIAL THE INFORMATION CONTAINED IN THIS DRAWING IS THE SOLE PROPERTY OF USAS MOTION - SUZHOU, CHINA. ANY REPRODUCTION IN PART OR AS A WHOLE WITHOUT THE WRITTEN PERMISSION OF USAS MOTION - SUZHOU, CHINA IS PROHIBITED.		CHECKED		TITLE: <h1>LINEAR ACTUATOR</h1>
		ENG APPR.	WYG 07-09-26	
INTERPRET GEOMETRIC TOLERANCING PER: ANSI Y14.5M-1982.		MFG APPR.		
		Q.A.	LBQ 07-09-26	SIZE DWG. NO. REV B VLR0087-0563-00A X1
DO NOT SCALE DRAWING		COMMENTS:		SCALE: 1:1.5 SHEET 1 OF 1